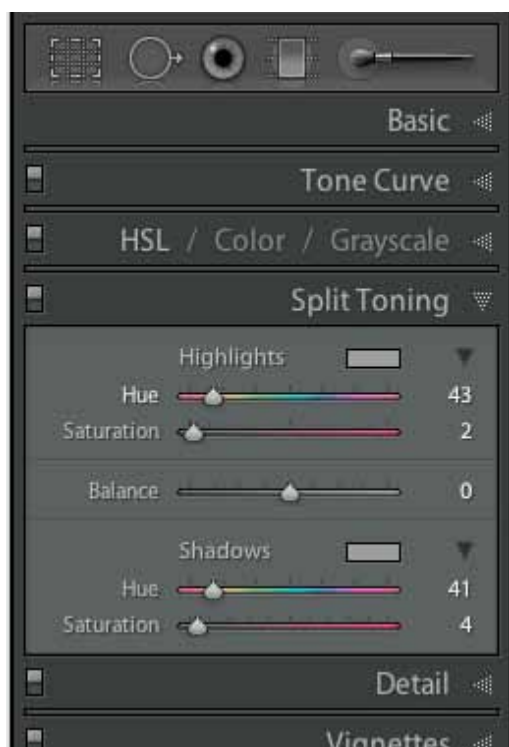


# Black & White Toning in Lightroom

---

## Tone #1: CSM Ilford Multigrade

- ▶▶ **Select Split Tone on the right side Development Module.**
  - ▼ Type the Highlights and Shadows numbers from the illustration into your Lightroom Split Tone settings Panel.



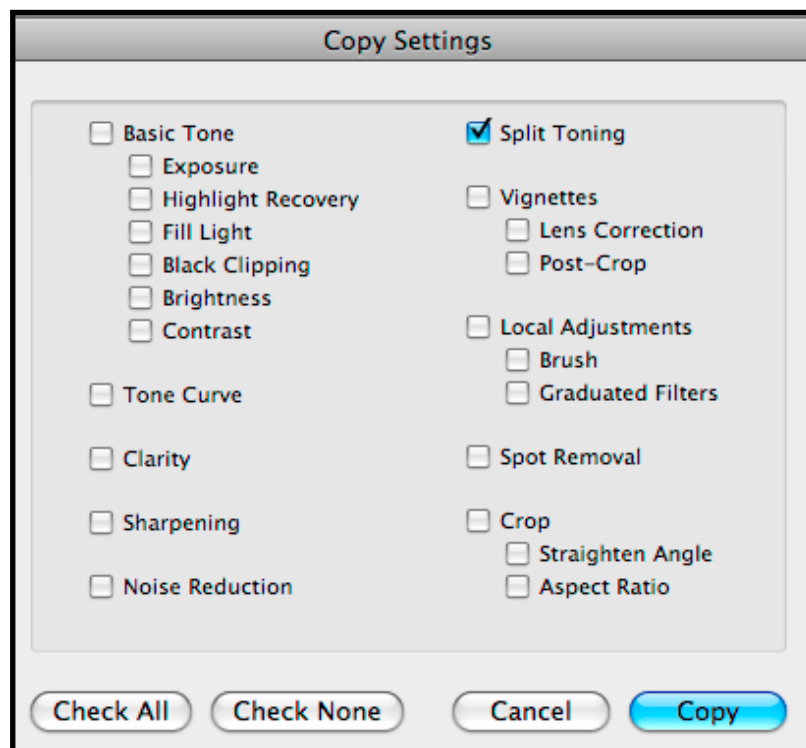
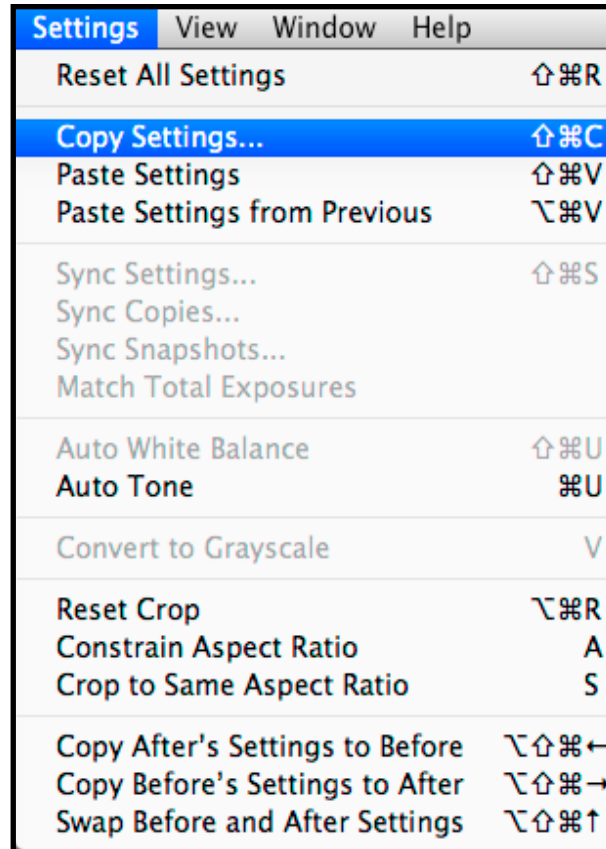
© Richard Lohmann

►► **Now turn these setting into a User Preset.**

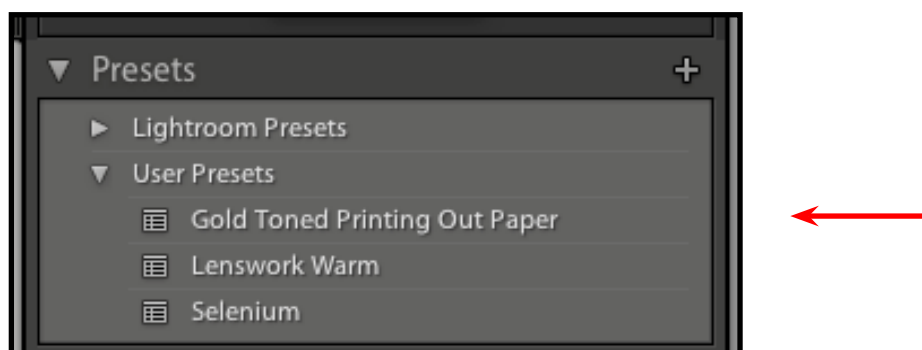
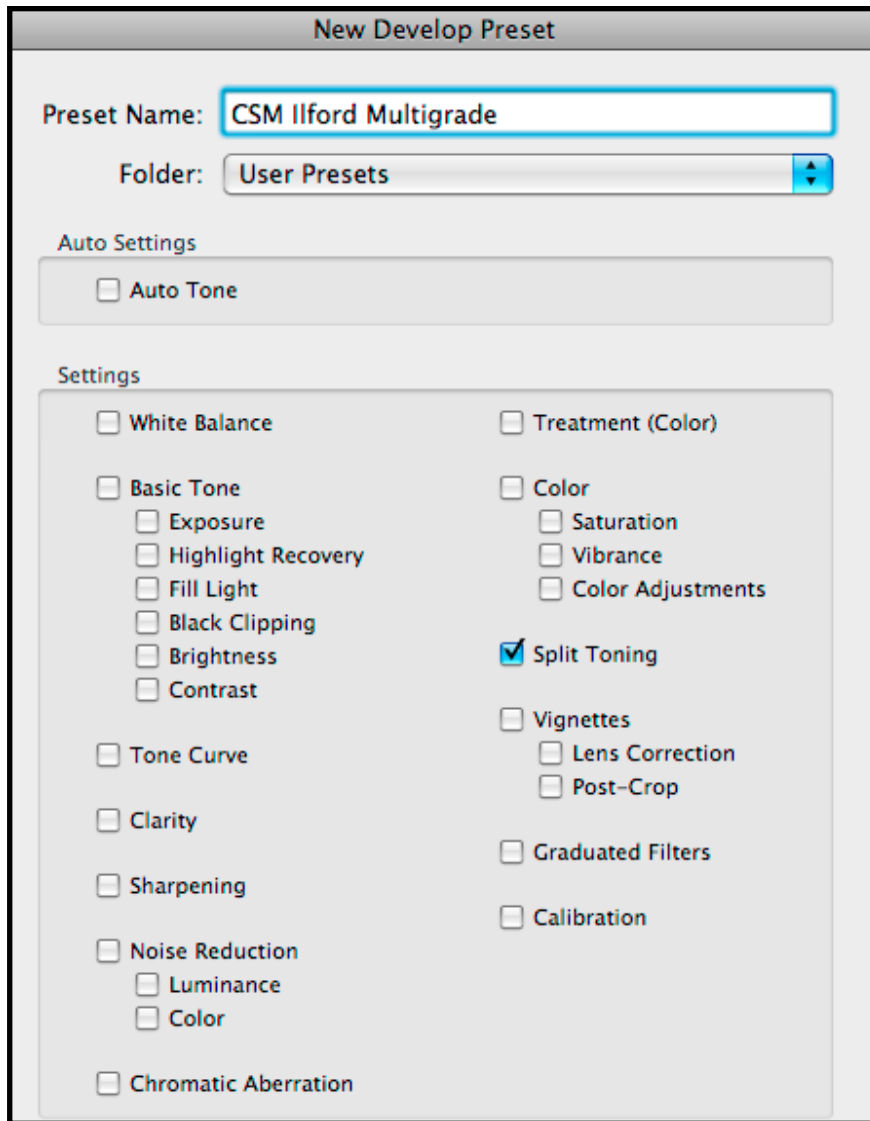
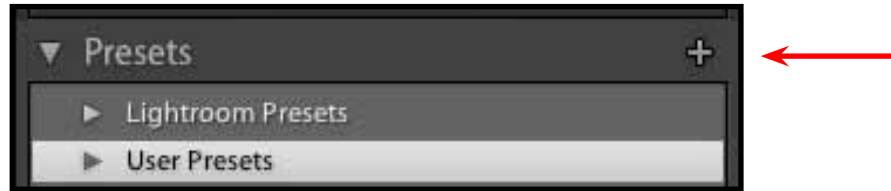
▼ Lightroom>Settings>Copy Settings.

▼ On the next screen click the "Check None" button and then place a check on "Split Toning" box.

▼ Click the Copy button.



- ▶▶ Go to the Presets on the Left Development panel and click on the + icon.
  - ▼ Name this New Develop Preset "Gold Toned Printing Out Paper", then click the "Create" button.
- ▼ This will now be a Preset listed under User Presets. (You will make 3 presets)



## *Tone #2: Lenswork Warm*

- ▶▶ **Select Split Tone on the right side Development Module.**
  - ▼ Use these new Highlights and Shadows numbers.
- ▶▶ **Create another User Preset and title it "Lenswork Warm."**



© Richard Lohmann

## Tone #3: Selenium

- ▶▶ **Select Split Tone on the right side Development Module.**
  - ▼ Use these new Highlights and Shadows numbers.
- ▶▶ **Create another User Preset and title it "Selenium."**



© Richard Lohmann



*No Tone*



*Selenium*

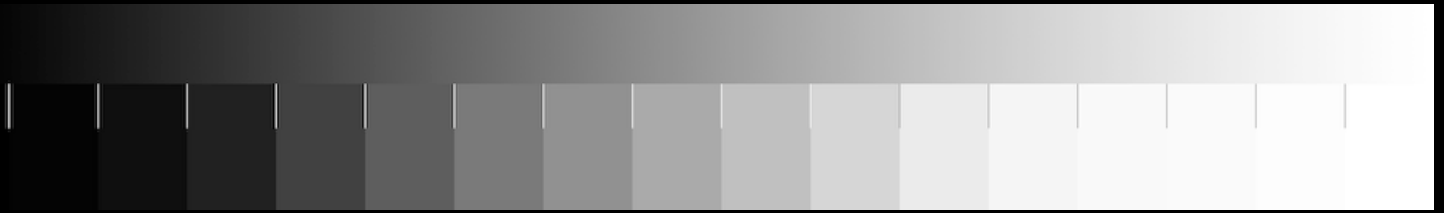


*CSM Ilford Multigrade*

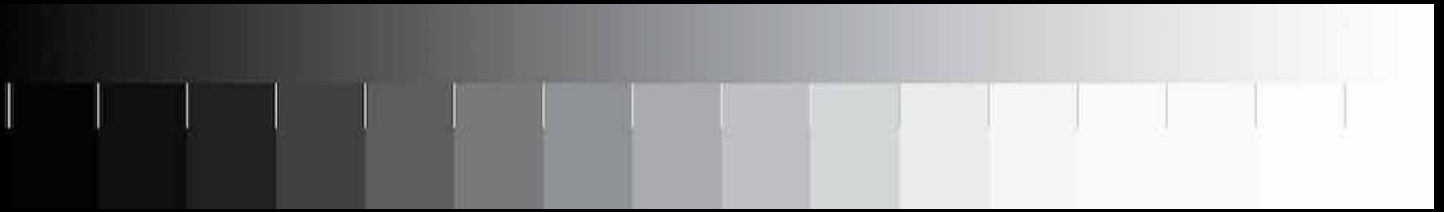


*Lenswork Warm*

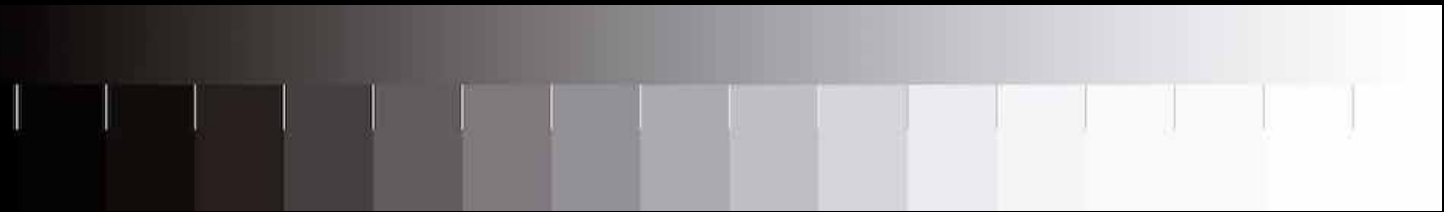
*Photograph by Richard Lohmann*



*No Tone*



*Selenium*



*CSM Ilford Multigrade*



*Lenswork Warm*